

*Article*

## An Engineering Evaluation on the Glimpse of Satellite Image Pre-processing Utility Tools

Sunitha Abburu\* and Suresh Babu Golla

Department of Computer Applications, Adhiyamaan College of Engineering, Tamilnadu, India  
\*Email: drsunithaabburu@yahoo.com (Corresponding author)

**Abstract.** The advancement of technology in the area of satellite remote sensing has been generating voluminous amount of satellite images at regular intervals regularly. The satellite image analysis derive very useful, invaluable and essential inputs for various applications such as disaster management, civil aviation, meteorology, ocean observation systems, earth science studies and defense applications, etc. The satellite image analysis technique provides the necessary inputs for image preprocessing systems as a basic prerequisite and essential ingredient. Over the past several years many satellite image preprocessing tools have been developed with various features. The choice of satellite image preprocessing tools basically depend on the purpose of image analysis, the features of satellite image preprocessing tools and the specific need and application. Due to a large number of applications of satellite images, user has a wide ranging choice to select optimally the right preprocessing tool for the right application. Thus, the present study helps in aiding the proper understanding and selection of the various satellite image preprocessing tools and their features for any specific application. To facilitate this scheme, the current study has identified various satellite image preprocessing tools and prominent features of the desired tool. Briefly, the study presents a clear understanding with specific examples on the various available tools and features for the user specific application for the desired satellite images. The various features of the satellite image preprocessing tools have been presented in detail for ready reference, guidance and usage.

**Keywords:** Satellite image, preprocessing tools.

ENGINEERING JOURNAL Volume 19 Issue 2

Received 24 July 2014

Accepted 6 November 2014

Published 30 April 2015

Online at <http://www.engj.org/>

DOI:10.4186/ej.2015.19.2.129

## 1. Introduction

Remote sensing technology is involved in study, monitor and management of diverse fields such as agriculture, forestry, geology, water, ocean etc. It is a major source for collecting information. Remote sensing technology reduces study time and complexity of field work [1]. Due to availability of very high spatial resolution satellites in the recent years, huge satellite data is available, which is useful for various applications. Satellite remote sensing technology plays a vital role in major applications such as environment monitoring, weather forecasting, information technology, communication, spatial data acquisition and management etc. [2, 3].

Satellite remote sensing technology is providing environmental data by observing, evaluating and measuring the conditions of various factors [4]. The technology provides quantitative and qualitative information that cannot be obtained by any other data gathering methods. Satellite remote sensing technology collects data/images timely and data volumes have been growing at an exponential rate [5]. Today satellite data and images are assisting in different applications like disaster management, airlines, earth analysis, defense, country planning, environment monitoring, weather forecasting, information technology, meteorology, oceanology and for several governmental non-governmental activities.

The factors like changes in scene illumination, atmospheric conditions, instrument response characteristics, temporal and spatial radiometric variations between scenes and earth rotation etc. shows impact on the satellite images, results in noise and errors in satellite images [6]. Preprocessing of satellite images prior to image classification and change detection is more important. Preprocessing of satellite image includes a series of sequential operations such as atmospheric correction or normalization, image registration, geometric correction, and masking [7]. A major challenge to scientists, engineers and business people is to extract valuable information from raw satellite image data. Due to size, resolution of satellite images there is a strong need of effective and efficient satellite image preprocessing tools.

The current research work provides a detailed study on various satellite image preprocessing tools. This paper also gives a comparative study of satellite image preprocessing tools with respect to their features.

The rest of the paper is organized as follows. Section 2 gives brief description on satellite image preprocessing, section 3 lists few benefits of satellite image preprocessing, section 4 describes important features of satellite image preprocessing tools, section 5 discusses few satellite image preprocessing tools, section 6 provides summary of satellite image preprocessing tool comparison and section 7 concludes.

## 2. Satellite Image Preprocessing

Mather [8] defines the term preprocessing as the correction of geometric and radiometric deficiencies and the removal of data errors. Satellite image preprocessing includes a series of operations and it is essential for further processing and imagery analysis.

Satellite image preprocessing operations are referred to as image restoration and rectification [9]. Satellite image restoration and rectification are used to correct sensor, platform-specific radiometric and geometric distortions of data. Radiometric corrections are necessary due to variations in scene illumination and viewing geometry, atmospheric conditions, and sensor noise and response. Each of these will vary depending on the specific sensor and platform used to acquire the data and the conditions during data acquisition [10]. From [6] and [11], major activities of satellite image preprocessing are:

- Geometric correction and orthorectification
- Correction for noise
- Prior analysis
- Shadow Compensation
- Image Transformation
- Image Filtering for Edge Enhancement
- Resolution Increasing
- Extract and analyze low-level features of satellite images.

## 3. Benefits of Satellite Image Preprocessing

- To extract and analyze low-level features of satellite images
- Improve usage of satellite images

- Improve satellite image retrieval system
- Detects and remove noise from satellite images
- Conversion of image into information
- Support valuable information extraction from raw image data

#### 4. Features of Satellite Image Preprocessing Tools

One of the important decisions to be taken in the satellite image preprocessing is to select a satellite image preprocessing tool. To select an appropriate tool, there is a strong need of compare satellite image preprocessing tools with respect to features. Following are few important features of satellite image preprocessing tools.

**Platform:** Provides information of supported platforms such as java, C++ and .net etc.

**OS:** Operating system that runs satellite image preprocessing tool

**Input formats:** Satellite image preprocessing tool supported file formats such as jpeg, png and raster images etc.

**Editing** allows user to edit satellite image. Satellite image edit feature includes pixel editing, image adjustments like brightness, contrast and curve controls etc.

**Extensibility** enhances functionality of satellite image preprocessing tool using plugins

**Feature extraction:** It is a type of dimensionality reduction. This feature efficiently represents interesting parts of a satellite image as a compact feature vector. Feature extraction is useful to quickly complete operations such as image matching and retrieval.

**Output formats** are out comes from a satellite image preprocessing tool after feature extraction, color processing, segmentation and edit etc.

**Color processing** feature allows to modify the color values of pixels in satellite images

**Geometric transformations** changes positions of pixels in satellite image. Geometric transformations include warping, registration and morphing etc. This feature allows elimination of geometric falsehood occurs when an image is captured by satellite.

**Segmentation** divides a satellite image into multiple parts. This feature is used to identify objects or other relevant information in satellite images.

**Classification** groups satellite image pixels into meaningful classes

**Image enhancement** involves in noise removal and brighten satellite image. It makes easier to identify key features and improves further analysis.

**Image analysis** extracts meaningful information from satellite images. It include functions finding shapes, detecting edges, counting objects and measuring properties of an object.

**Change detection** assists to identify modification land cover within the same category. This feature can be used in various applications such as disaster management, urban monitoring and land cover change analysis etc.

#### 5. Satellite Image Preprocessing Tools

Satellite image preprocessing tools plays a vibrant role in many remote sensing activities. Different organizations, research communities and software companies have developed several tools for satellite image processing. This section describes few popular satellite image preprocessing tools: ImageJ, Orfeo Toolbox, Grass Gis, SAGA, ECognition, Erdas Imagine, ENVI, and ArcGIS.

##### a) ImageJ

ImageJ [12] has been developed by National Institutes of Health, USA. Its main features are satellite image processing and analysis. ImageJ has more than five hundred plugins, its functionality can be expanded using these plugins. Plugins can add support for new file formats or they can filter or analyze images. It runs on a variety of operating systems. ImageJ provides graphical user interface to perform satellite image preprocessing. Figure 1 shows architecture of ImageJ.

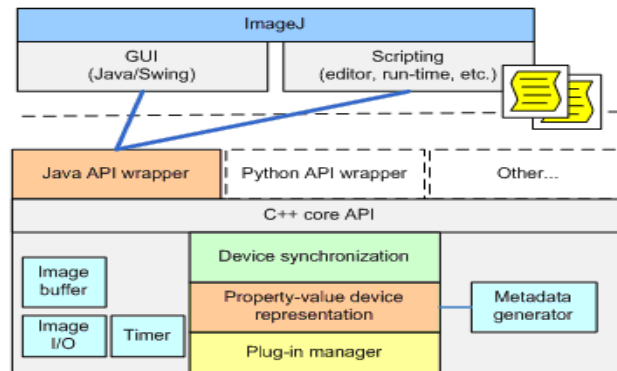


Fig. 1. ImageJ architecture.

## b) Orfeo Toolbox

Orfeo Toolbox (OTB) [13–15] is developed by French Space Agency. OTB is developed based on the medical image processing library ITK [16]. OTB is a set of algorithmic components. It provides an open source library of image processing algorithms. OTB is adapted to large remote sensing images that allow methodological research. OTB provides more of image manipulation utilities and high-level processing chains like ortho-rectification, classification or segmentation. OTB major functionalities are image access, filtering features extraction, classification, change detection, image segmentation and information extraction. OTB is adopted for processing and improve use of images derived from Pleiades (PHR) and Cosmo-Skymed (CSK) satellites. Figure 2 Shows segmentation of satellite image using OTB [17].

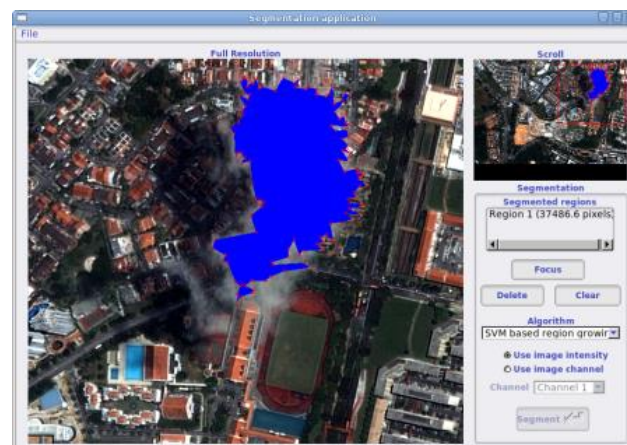


Fig. 2. Satellite image segmentation using OTB.

## c) GRASS GIS

GRASS (Geographic Resources Analysis Support System) GIS [18] developed by the U.S. Army Construction Engineering Research Laboratories, USA. GRASS GIS is a open source Geographic Information System (GIS) software. It is used for geospatial data management and analysis, image processing, graphics and maps production, spatial modeling and visualization. Academic, governmental agencies and environmental consulting companies are using GRASS GIS. Figure 3 Shows architecture of GRASS GIS.

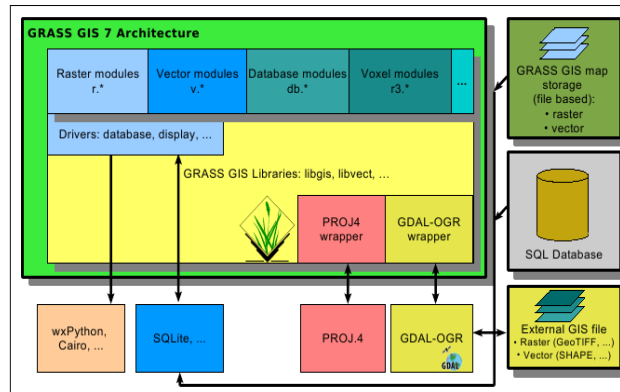


Fig. 3. GRASS GIS Architecture

#### d) SAGA

SAGA (System for Automated Geo-scientific Analyses) [19] has been developed by Dept. of Physical Geography, Gottingen. SAGA is a free and open source software developed using C++. SAGA has been developed for easy and effective implementation of Geo-scientific methods. SAGA provides user friendly interface and many visualization options. SAGA comes with a comprehensive and a set of free modules. Many modules perform simple data operations. Figure 4 shows architecture of SAGA.

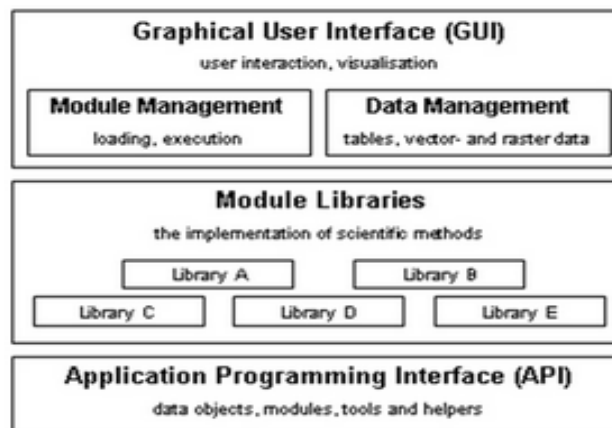


Fig. 4. SAGA Architecture.

#### e) eCognition

eCognition [20] has been developed by Trimble Geospatial Imaging. It is the first object-oriented image analysis software with client server environment [21]. It is most advanced image analysis software available for geospatial applications. eCognition imports a variety of geospatial data, such as raster images, GIS vectors, radar and even hyper spectral data, combining them together into a rich stack of geo-data for analysis. eCognition can be used to identify changes over time or features on the earth's surface across very large sets of data. Figure 5 shows eCognition interface.





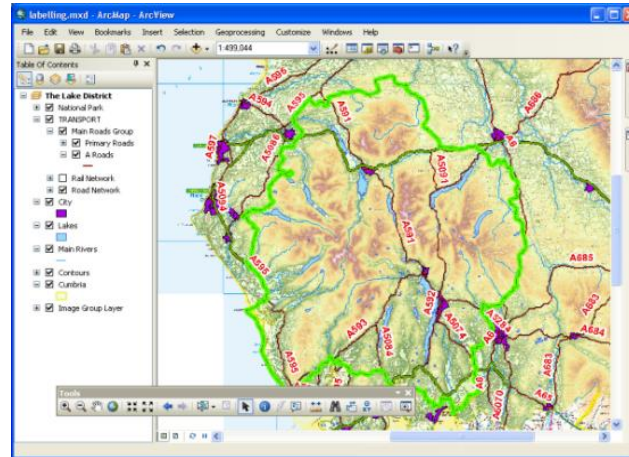


Fig. 7. ERDAS imagine interface.

## h) ArcGIS

ArcGIS [24] has been developed by ESRI. It supports deep analysis on spatial information, greater understanding of spatial data and helps in decision making. ArcGIS has capability to create, organize, and share geographic information and tools with anyone by using intelligent online maps and useful applications. ArcGIS applications can run virtually anywhere on desktops, the web, smartphones and tablets. ArcGIS can combine information from independent layers by applying a rich set of spatial operations for effective special analysis. Figure 8 shows ArcGIS architecture.

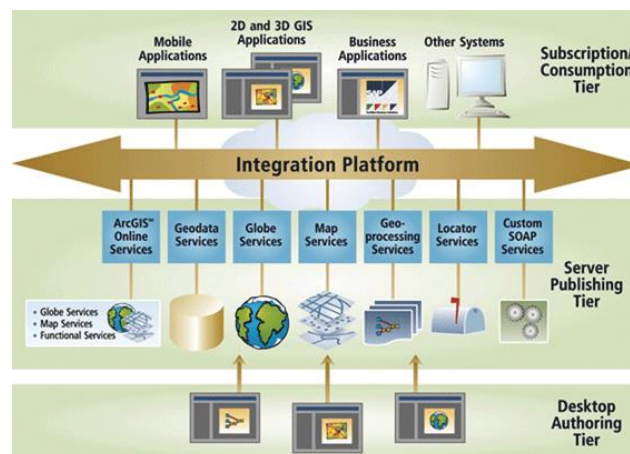


Fig. 8. ArcGIS architecture.

## 6. Comparison of Satellite Image Preprocessing Tools

After a detailed study on satellite image preprocessing tools, a matrix representing various features is presented. Table 1 shows the summary of comparison of satellite image preprocessing tools. X-axis represents various satellite image preprocessing tools and Y-axis represents features. This comparison helps the beginners of remote sensing technologies to understand the differences among various satellite image preprocessing tools and to choose a better tool to perform preprocessing operations on satellite images.

Table 1. Comparison summary of satellite image preprocessing tools.

Tools/Features	ImageJ	Orfeo Tool Box	Grass GIS	SAGA	eCognition	ENVI	ERDAS IMAGINE	Arc GIS
Platform	Java	C++	C++	C++	-	Java	C and C++	Java/.Net
OS	Linux, Mac OS X and Windows	Windows/Linux/Unix/Macosx	Linux, Windows and MacOS	Windows/Linux	Windows 64bit	Windows, Mac and Linux	Windows and Linux	Windows and Linux
Input formats	GIF, JPEG, BMP, PNG, PGM, FITS etc.	Raster and vector data	png, XCF and JPG	Raster data	JPEG, Raster	Flat Binary Files, Landsat Files, SPOT Files, etc.	All Image formats and Raster data	All Image formats
Editing Extensibility	Yes	Yes	Yes	Yes	Yes	-	Yes	Yes
Availability	Free	Free	Free	Free	Commercial	Commercial	Commercial	Commercial
Feature Extraction	Yes	Yes	Yes	Yes	Yes	Yes	Yes	Yes
Output Formats	Image	image, text file, binary file	Vector, Image	JPEG and TIFF	Raster and Image	Generic Image Formats, Image Processing Formats, Vector Formats	Image and Raster	Image and Raster data
Color Processing	Yes	Yes	Yes	Yes	Yes	Yes	Yes	Yes
Geometric Transformations	Yes	Yes	-	Yes	-	Yes	Yes	Yes
Segmentation	Yes	Yes	Yes	Yes	Yes	Yes	Yes	Yes
Classification	Yes	Yes	Yes	yes	Yes	Yes	Yes	Yes
Image Enhancement	Partial	Yes	Yes	-	Yes	Yes	Yes	Yes
Image Analysis	Yes	Yes	Yes	Yes	Yes	Yes	Yes	Yes
Visualization	Partial	Yes	Yes	Yes	Yes	Yes	Yes	Yes
Change detection	No	Yes	-	Yes	Yes	Yes	Yes	Yes

Yes: Support, No: Not Support and -: Need further study



## 7. Conclusion

The motivation behind this research work is the necessity and lack of availability of satellite image preprocessing tools available in a scattered form in various literature. In this paper a detailed study on the various types of satellite preprocessing tools has been presented bringing into one literary platform for easy availability, access and usage. These tools are essential for more accurate applications for best practices in the area helping the users for identification of appropriate tools through their unique features. This has been achieved bringing out a matrix of various satellite preprocessing tools and their features presenting a summary of comparisons for better utilization. The detailed study and comparison of satellite image preprocessing tools concludes that all tools supports windows operating system and developed using object oriented programming languages such as C++ and Java. ImageJ, OTB, GRASS GIS and SAGA are free and open source software and the rest are commercial. ImageJ provides more plugins and provides better performance for small scale applications. Orfeo Tool Box, SAGA, eCognition and ERDAS tools allow raster and vector data formats as inputs. ArcGIS, ERDAS, eCognition and ENVI provides comprehensive features for deep analysis and preprocessing. These tools have commercial implications. This particular study helps the users to identify the various satellite preprocessing tools and exhibit their unique features for identification of best tools for optimum needs and requirements.

## References

- [1] V. Chaichoke, P. Supawee, V. Tanasak, and K. S. Andrew, "A Normalized Difference Vegetation Index (NDVI) Time-Series of Idle Agriculture Lands: A Preliminary Study," *Engineering Journal*, vol. 15, no. 1, pp. 9–16, 2011.
- [2] Remote Sensing Applications. [Online]. Available: <http://www.isro.org/scripts/remotesensingapplications.aspx> [Accessed: Feb. 13th, 2014].
- [3] R. Chris and S. Chalermchon, "Contribution of GNSS CORS infrastructure to the mission of modern geodesy and status of GNSS CORS in Thailand," *Engineering Journal*, vol. 15, no. 1, pp. 25–42, 2011.
- [4] A. O. Machael and T. K. Gerg, "Remote sensing (satellite) system technologies," *Environmental Monitoring, Encyclopedia of Life Support Systems (EOLSS)*, vol. 1.
- [5] X. Zheng, X. Sun, K. Fu, and Hongqi Wang, "Automatic annotation of satellite images via multifeature joint sparse coding with spatial relation constraint," *IEEE Geoscience and Remote Sensing Letters*, vol. 10, no. 4, pp. 652–656, July 2013.
- [6] M. B. Caroline and W. H. David, "Pre-processing methodology for application to Landsat Tm/Etm+imagery of the wet tropics," Rainforest CRC, Research Report, July 2006.
- [7] Image Preprocessing. [Online]. Available: <http://cast.uark.edu/home/research/environmental-studies/lulc-change-in-carroll-county/methodology1/image-preprocessing.html> [Accessed: Jan. 8th, 2014].
- [8] E. J. Milton, "Review of 'Mather, P.M., 1999: Computer processing of remotely-sensed images. An introduction. Chichester: Wiley'," *Progress in Physical Geography*, vol. 25, no. 1, pp. 145–146, 2001.
- [9] Introduction to Image Processing in IDL, Image Processing. (June 2010). [Online]. pp. 9-16. Available at : Available: <http://www.exelisvis.com/docs/pdf/image.pdf> [Accessed: Jan. 8th, 2014].
- [10] Pre-processing. [Online]. Available: <http://www.nrcan.gc.ca/earth-sciences/geomatics/satellite-imagery-air-photos/satellite-imagery-products/educational-resources/9403> [Accessed: Jan. 6th, 2014].
- [11] S. Valery and M. Aliaksei, "Multispectral image pre-processing for interactive satellite image classification," in *Proc. Digital Earth Summit on Geoinformatics*, 2008, pp. 369–374.
- [12] ImageJ. [Online]. Available: <http://rsbweb.nih.gov/ij/features.html> [Accessed: Mar. 3rd, 2014].
- [13] Orfeo Toolbox. [Online]. Available: <http://www.orfeo-toolbox.org/otb/> [Accessed: Mar. 3rd, 2014].
- [14] The ORFEO Tool Box Software Guide, Updated for OTB-4.0. (March 13, 2014) Available: <http://orfeo-toolbox.org/SoftwareGuide/index.html> [Accessed: Apr. 8th, 2014]
- [15] M. Grizonnet, J. Michel, J. Inglada, and M. Savinaud. (June 6th, 2013). Exploit Pleiades PHR data with the ORFEO ToolBox. [Online]. Available at : [https://earth.esa.int/documents/10174/642983/D3P1b\\_msavinaud\\_LTC2013.pdf](https://earth.esa.int/documents/10174/642983/D3P1b_msavinaud_LTC2013.pdf)
- [16] ITK. [Online]. Available: <http://www.itk.org/> [Accessed: Jan. 8th, 2014].

- [17] C. Emmanuel, I. Jordi, and G. Alain, “Orfeo Toolbox: A complete solution for mapping from high resolution satellite images,” *The International Archives of the Photogrammetry, Remote Sensing and Spatial Information Sciences*, vol. 37, pp. 1263–1268, 2008.
- [18] GRASS GIS. [Online]. Available: <http://grass.osgeo.org/documentation/general-overview> [Accessed: Apr. 8th, 2014]
- [19] SAGA. [Online]. Available: <http://www.saga-gis.org/en/index.html> [Accessed: Mar. 14th, 2014].
- [20] M. Belgiu and J. Thomas, “Ontology based interpretation of Very High Resolution imageries—grounding ontologies on visual interpretation keys,” in *AGILE 2013—Leuven*, May 14–17, 2013.
- [21] G. Willhauck, J. J. Caliz, C. Hoffmann, I. Lingenfelder, and M. Heynen, “Object-oriented ship detection from VHR satellite images,” in *Semana Geomática*, Barcelona, Spain, 2005.
- [22] ENVI. [Online]. Available: <http://www.exelisvis.com/ProductsServices/ENVI/ENVI.aspx> [Accessed: Mar. 14th, 2014].
- [23] ERDAS IMAGINE. [Online]. Available: <http://geospatial.intergraph.com/products/ERDASIMAGINE/ERDASIMAGINE/Details.aspx> [Accessed: Feb. 15th, 2014].
- [24] ArcGIS. [Online]. Available: <http://www.esri.com/software/arcgis/arcgis-for-desktop/whats-coming/features> [Accessed: Feb. 15th, 2014].