

Article

Observation of Bimodal LLDPE/TiO₂ Nanocomposites Produced by *in situ* Polymerization with Zirconocene/MMAO Catalysts via Ga Modification on TiO₂ Nanofiller

Ekkrachan Chaichana¹, Somsakun Pathomsap², Takeshi Shiono³, and Bunjerd Jongsomjit^{2,*}

¹ Chemistry Program, Faculty of Science and Technology, Nakhon Pathom Rajabhat University, Nakhon Pathom 73000, Thailand

² Center of Excellence on Catalysis and Catalytic Reaction Engineering, Department of Chemical Engineering, Faculty of Engineering, Chulalongkorn University, Bangkok 10330, Thailand

³ Department of Applied Chemistry, Graduate School of Engineering, Hiroshima University, Higashi-Hiroshima 739-8527, Japan

*E-mail: bunjerd.j@chula.ac.th (Corresponding author)

Abstract. Nano-TiO₂ and its modification with gallium (nano-TiO₂-Ga) and zirconium (nano-TiO₂-Zr) were used here as nanofillers in production of linear low-density polyethylene (LLDPE). The nanoparticles were immobilized by modified-methyl aluminoxane (MMAO) to be a catalytic filler prior to introducing into the *in situ* polymerization of ethylene and 1-hexene using zirconocene catalyst, and consequently produced LLDPE/TiO₂ nanocomposites. It was found that the modified nano-TiO₂ by Ga and Zr can hold more amount of MMAO on the surface than the unmodified one. This is because the modified particles have a stronger interaction between MMAO and the surface, as observed by thermal gravimetric analysis (TGA). However, the stronger interaction leads to lower catalytic activities for the polymerization systems. Observing from the molecular weight distribution (MWD) of the resulting products, it was found that the modified nano-TiO₂ with Ga can produce the LLDPE/TiO₂ nanocomposites with bimodal MWD. This result was due to the heterogeneity of the surface after modification, which can generate the multiple active sites for the catalyst, leading to multimodal properties of the polymer.

Keywords: Polymer nanocomposite, metallocene, nano-TiO₂, XPS.

ENGINEERING JOURNAL Volume 17 Issue 3

Received 6 November 2012

Accepted 11 March 2013

Published 1 July 2013

Online at <http://www.engj.org/>

DOI:10.4186/ej.2013.17.3.33

1. Introduction

Polymer composites are the polymer in which a filler such as fibre, whiskers and particles are embedded. They are created in order to overcome some drawback properties of the host polymers with the distinguished properties of the fillers. In general, polymer composites can be prepared by three methods: (i) a melt mixing [1-3], (ii) a solution blending [4] and (iii) *in situ* polymerization [5-7]. Due to the direct synthesis via polymerization along with the presence of fillers, the *in situ* polymerization is perhaps considered to be the most promising technique to produce polymer composites with homogeneous distribution of the particles inside the polymer matrix.

For the *in situ* polymerization, it is because the fillers were introduced during polymerization, the mechanism of polymer growth can be influenced by the properties of introduced fillers. This differs from the other methods, which the fillers are introduced after the polymers are completely formed. Therefore, the fillers in those methods cannot affect the growth mechanism of the polymers. The polymer growth mechanism controls many polymer properties including molecular weight (MW) and molecular weight distribution (MWD). For example, the growth mechanism with the fast chain transfer reaction can provide the polymer product with the low MW [5], and on the other hand, the high MW can be obtained with the slow chain transfer reaction. Polymers, which consist of two fractions of different molecular weights (low and high MW) are classified as bimodal polymers or bimodal MWD polymers due to having two molecular weight distribution maxima. Bimodal MWD polymers have good mechanical and rheological properties beneficial from the fractions of high MW and low MW. As mentioned above, the different MW fractions of polymers can be obtained by varying the growth mechanism. Hence, if the fillers introduced into the polymerization system have the ability to create various growth mechanisms to the system, they may produce polymers consisting of two different MW fractions or bimodal MWD polymers.

In general, a mixture of two catalysts has usually been used to produce a bimodal MWD polymer due to naturally posing dual active sites [6-7]. However, by a heterogeneous catalytic system, only one catalyst fixed on the certain support (filler) can generate dual active sites due to the heterogeneity of the support. As observed by our previous work [8] using micro-TiO₂ as a support for zirconocene/MAO catalyst, it also found that this catalytic support can produce a bimodal MWD polymer. For further study in production of bimodal MWD polymer here, the TiO₂ in nanometer scale (nano-TiO₂) was used instead for gaining an advantage of nanotechnology to the resulting product, along with its modification by gallium (Ga) and zirconium (Zr), which have been proven previously as a good modifier in the catalytic system [9, 10]. Those modifiers were aimed to enhance some properties of the nano-TiO₂, and also the polymer nanocomposites product particularly in generating bimodal properties. In addition, to get better understanding in the role of the fillers taking in the *in situ* polymerization, a variety of parameters changed in the polymer composites resulted from the fillers need to be concerned. Thus, in this study, the efficient techniques i.e. X-ray diffraction (XRD), X-ray photoelectron spectroscopy (XPS), ¹³C carbon nuclear magnetic resonance (¹³C NMR) and gel permeation chromatography (GPC) were used here for measuring the changed parameters in the fillers and the polymer nanocomposite products.

2. Experimental

2.1. Materials

All the chemicals and the polymerization were performed under an argon atmosphere using a glove box and/or Schlenk techniques. Titanium (IV) oxide nanopowder (100 % anatase, TiO₂), Gallium (III) nitrate hydrate (99.9%) and Zirconium (IV) n-propoxide 70 wt% solution in 1-propano were purchased from the Aldrich Chemical Company. Toluene was dried over dehydrated CaCl₂ and distilled over sodium/benzophenone before use. The rac-ethylenebis (indenyl) zirconium dichloride (rac-Et[Ind]₂ZrCl₂) was obtained from the Aldrich Chemical Company, Inc. Modified methylaluminoxane (MMAO) in hexane was donated by Tosoh (Akzo, Japan). Trimethylaluminum (TMA, 2 M in toluene) was supplied by Nippon Aluminum Alkyls, Ltd., Japan. Ultrahigh purity argon was purchased from Thai Industrial Gas Co., Ltd., and further purified by passing it through columns that were packed with BASF catalyst R3-11G (molecular-sieved to 3Å), sodium hydroxide (NaOH), and phosphorus pentoxide (P₂O₅) to remove traces of oxygen and moisture. Ethylene gas (99.96%) was donated by the National Petrochemical Co., Ltd., Thailand. 1-Hexene (99%, d = 0.673 g/mL) was purchased from Aldrich Chemical Company, Inc.

2.2. Modification of Nano-TiO₂ Nanoparticles

Ga-modified TiO₂ / Zr-modified TiO₂ fillers were prepared by incipient wetness impregnation method. A designed amount of gallium (III) nitrate hydrate / zirconium (IV) n-propoxide was dissolved in deionized water, and then impregnated into the nano-TiO₂ fillers with 1 wt% Ga and 1 wt% Zr by calculating of the required amounts of Ga/Zr loading. The fillers were dried at 110°C for 12 hours and calcined in air at 500°C for 4 hours for Ga modification and calcined at 350°C for 2 hours for Zr modification.

2.3. *In Situ* Polymerization Reaction

The ethylene and 1-hexene copolymerization reaction was carried out in a 100 ml semi-batch stainless steel autoclave reactor equipped with a magnetic stirrer. Using a glove box, the desired amount of the nano-TiO₂ was placed into the reactor and magnetically stirred with 1.14 ml of MMAO for 30 min. Then, toluene was introduced into the reactor to a total volume of 30 ml. Separately, the desired amount of Et(Ind)₂ZrCl₂ (5×10^{-5} M) and TMA ($[Al]_{TMA}/[Zr]_{cat} = 2500$) was mixed and stirred for a 5-min aging process at room temperature. This mixture was then injected into the reactor. The reactor was frozen in liquid nitrogen to stop the reaction, and then injected 0.018 mol of 1-hexene. The reactor was evacuated to remove the argon atmosphere, and was then heated up to the polymerization temperature (70°C). To start the polymerization, 0.018 mole of ethylene (at 6 psi gauge) was fed into the reactor containing the 1-hexene and catalyst mixtures. After the ethylene was totally consumed, the reaction was terminated by the addition of acidic methanol and then stirred for 30 min. The copolymer product (white powder) was filtered, washed with methanol and dried at room temperature.

2.4. Characterization of Nano-TiO₂ Nanoparticles

- 1) *X-ray diffraction (XRD)*: XRD was performed to determine the bulk crystalline phases of the samples using a Siemens D-5000 X-ray diffractometer with Cu K_α ($k = 1.54439 \text{ \AA}$). The spectra were scanned at a rate of 2.4°/min in the range $2\theta = 20\text{--}80^\circ$.
- 2) *BET surface area*: Surface area measurement was carried out by low temperature nitrogen adsorption in a Micromeritic ChemiSorb 2750 system.
- 3) *Scanning electron microscopy (SEM)*: SEM was used to investigate the sample morphology of the nano-TiO₂. A JEOL mode JSM-5800 LV scanning microscope was employed.
- 4) *Transmission electron microscopy (TEM)*: TEM was used to determine the shape and crystalline size of the nano-TiO₂. Samples were dispersed in ethanol prior to TEM measurement a JEOL JEM-2010).

2.5. Characterization of MMAO-Supported Fillers

The fillers were prepared in the similar condition of using for *in situ* polymerization except that they were dried to remove the solvent prior to characterization.

- 1) *Thermal gravimetric analysis (TGA)*: TGA was performed using a TA Instruments SDT Q-600 analyzer. Samples of 10–20 mg were examined at a temperature ramping from 25 to 600°C at 2°C /min. The carrier gas was N₂ UHP.
- 2) *X-ray photoelectron spectroscopy (XPS)*: XPS was used to determine the binding energy (BE) and the amount of Al on sample surfaces. It was carried out using the Shimadzu AMICUS with VISION 2-control software. Spectra were recorded at room temperature in high-resolution mode (0.1 eV step, 23.5 eV pass energy) for Al 2p core-level region. The samples were mounted on pieces of adhesive carbon tape as pellets. The energy reference for Ag metal (368.0 eV for 3d_{5/2}) was used for this study.

2.6. Characterization of Polymer

- 1) *Differential scanning calorimetry (DSC)*: DSC was used to determine the melting temperature of ethylene/1-hexene copolymer products with a Perkin-Elmer Diamond DSC. The analyses were performed at a heating rate of 20°C/min in the temperature range of 50-150 °C.
- 2) *¹³Carbon nuclear magnetic resonance (¹³C NMR)*: ¹³C NMR spectroscopy was used to determine 1-hexene incorporation and copolymer microstructure. Each sample solution was prepared by dissolving 50 mg

of copolymer in 1,2-dichlorobenzene and CDCl_3 . The ^{13}C NMR spectra were taken at 100°C using a Bruker Advanced II 400 operating at 100 MHz with an acquisition time of 1.5 s and a delay time of 4 s.

- 3) *Gel permeation chromatography*: The molecular weight of polymer was determined using gel permeation chromatography (GPC, PL-GPC-220). Samples were prepared having approximately concentration of 1–2 mg/ml in trichlorobenzene (mobile phase) by using the sample preparation unit (PL-SP 260) with filtration system at a temperature of 140°C . The dissolved and filtered samples were transferred into the GPC instrument at 140°C . The calibration was conducted using the universal calibration curve based on narrow polystyrene standards.

3. Results and Discussion

3.1. Characteristics of Nanoparticles

Nano- TiO_2 particles (designated by TiO_2) was employed here as a filler along with the two modifications of them by Zr ($\text{TiO}_2\text{-Zr}$) and Ga ($\text{TiO}_2\text{-Ga}$). BET surface areas of the fillers were in order of; $\text{TiO}_2\text{-Ga} > \text{TiO}_2\text{-Zr} > \text{TiO}_2$ (120, 99, and $88\text{ m}^2/\text{g}$, respectively). It can be seen that both modifiers increased surface area of the nano- TiO_2 , and seemed not to block the pores of the main particles. The XRD patterns of the fillers shown in Fig. 1 were similar having XRD peaks at 25° , 37° , 48° , 55° , 56° , 62° , 69° , 71° , and 75° assigning to presence of anatase TiO_2 . No characteristic peaks of Zr or Ga were observed. This indicated that Zr and Ga were present in the highly dispersed form in nano- TiO_2 fillers, then being invisible by XRD. In addition, useful techniques i.e. SEM and TEM (Figs. 2 and 3) were used to examine the entire fillers to obtain the more details of them including morphology and particle size, but nevertheless no difference in those details was observed among them.

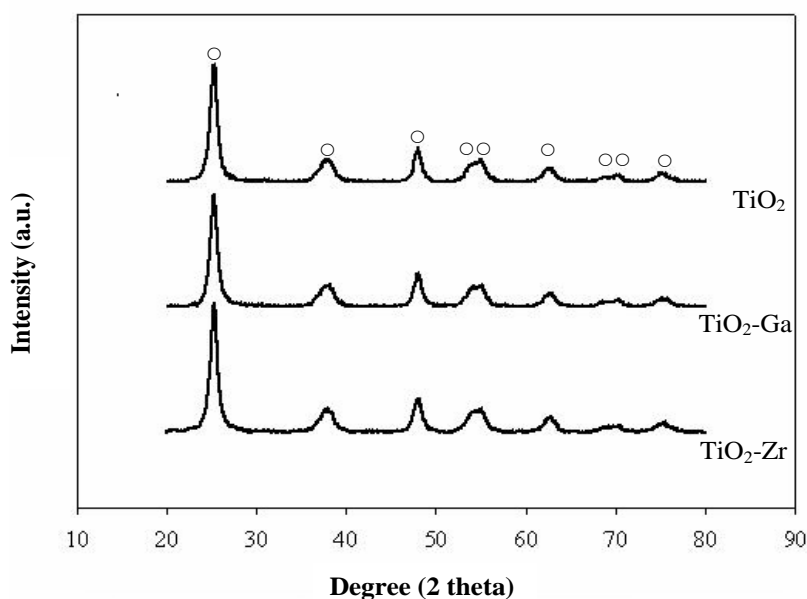


Fig. 1. XRD patterns of nano- TiO_2 fillers with different modifications; where (o) refers to anatase characteristic peak.

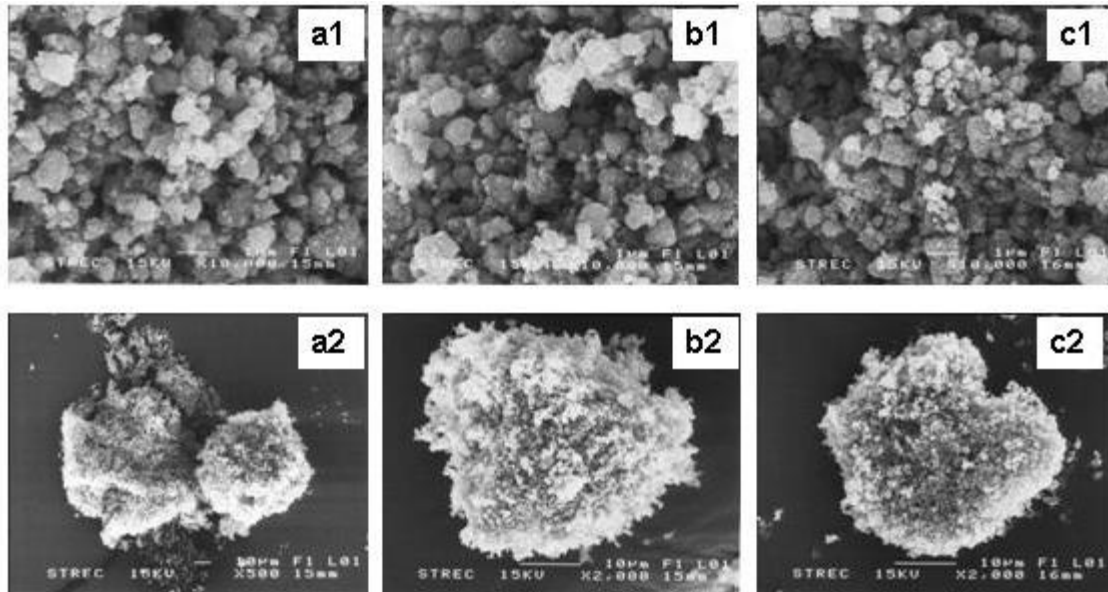


Fig. 2. SEM images of nano-TiO₂ fillers; (a1)/(a2): TiO₂; (b1)/(b2): TiO₂-Ga; and (c1)/(c2): TiO₂-Zr.

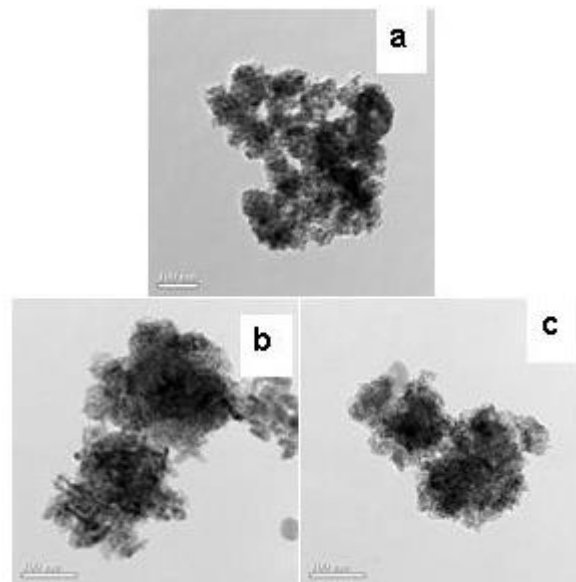


Fig. 3. TEM images of nano-TiO₂ fillers; (a) TiO₂; (b) TiO₂-Ga; and (c) TiO₂-Zr.

TGA measurement is one of the powerful techniques that can provide basic properties of the filler needed for used in *in situ* polymerization. The degree of interaction of the fillers and the MMAO cocatalyst, which engaged on them through the O_{filler}-Al_{MMAO} linkage [11] was also investigated by the TGA measurement. MMAO plays a crucial role in the catalytic system, such as being an activating agent and also a stabilizer for a cationic metallocene alkyl and/or counter-ion, and so on [9]. As a result, the interaction between MMAO and the fillers affected directly to the performance of MMAO, and consequently the catalytic activity of the system. As a matter of fact, too strong interaction can result in it being more difficult for the MMAO engaged with the fillers to react with metallocene catalyst during activation processes, leading to low activity for polymerization. Therefore, the entire fillers immobilized with MMAO were measured by TGA measurement in order to prove the interaction between them and MMAO.

The TGA can provide the degree of interaction in terms of weight loss and removal temperature as seen in Fig. 4. It was found that the weight loss of MMAO on each filler was in the order of TiO₂-Ga (16.3%) < TiO₂-Zr (16.8%) < TiO₂ (18.3%). This indicated that the MMAO present on the TiO₂-Ga filler

exhibited the strongest interaction, followed by $\text{TiO}_2\text{-Zr}$ and TiO_2 , respectively. The TGA results also suggest that the modification by Ga and Zr caused alteration in interaction of the main fillers (TiO_2). These results agree with the finding of our previous works [10, 15, 16], which exhibited the similar results even differed in type of the fillers.

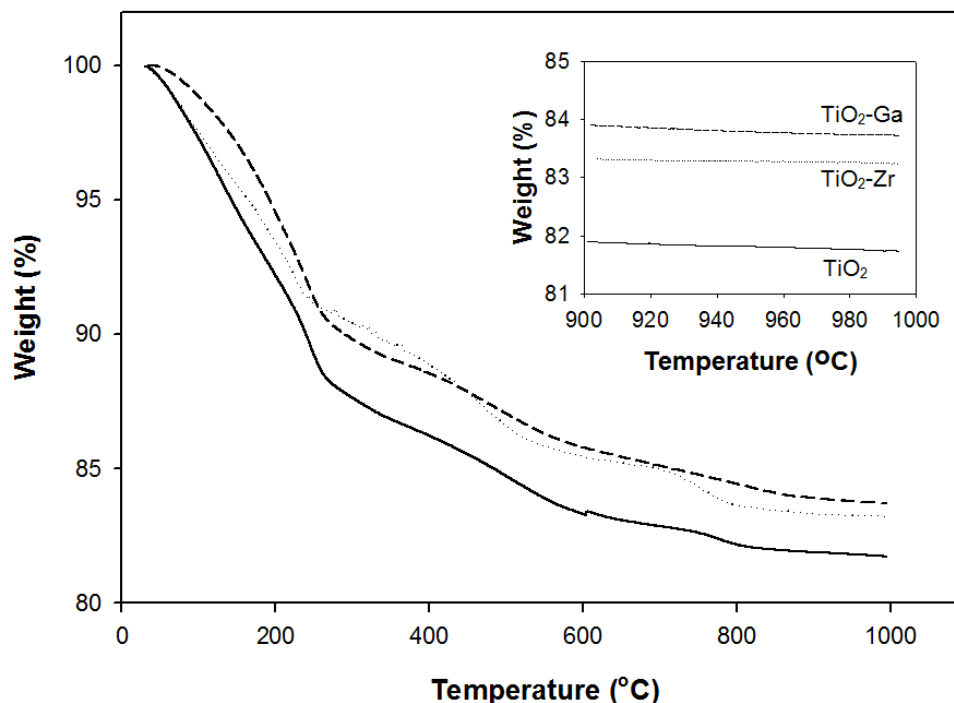


Fig. 4. TGA profile of $[\text{Al}]_{\text{MMAO}}$ on nano- TiO_2 fillers with different modifications.

The alteration in interaction of the fillers would be resulted from many factors, but mainly involving the change in surface chemistry of the fillers by modifiers. Thus, the technique with remarkable ability to detect the surface of the fillers should be used here to clarify the matter. XPS is one of the most powerful techniques used for many applications in surface analysis. So it is interesting in using XPS to investigate the influence of modifiers on the surface chemistry and consequently, on the interaction of the fillers. The parameters obtained from XPS including binding energy (B.E.) and mass concentration of detected elements in the fillers are shown in Table 1.

Table 1. The binding energy and elemental concentration on the surface of the fillers measured by XPS.

Filler	B.E. (eV)					Mass concentration (wt%)				
	Ti2p	O1s	Al2p	Zr3d	Ga2p	Ti2p	O1s	Al2p	Zr3d	Ga2p
TiO₂	459.4	532.5	75.0	-	-	0.92	67.99	31.08	-	-
TiO₂-Zr	459.3	532.3	74.9	182.6	-	3.60	62.36	33.81	0.24	-
TiO₂-Ga	459.2	532.3	74.9	-	1118.8	3.85	62.08	33.54	-	0.53

The binding energies of O1s and Al2p of the entire samples exhibited nearly the same values, all of which corresponded to the binding energies of methyl aluminoxane compound (MAO or MMAO) immobilized on the fillers as reported by Hagimoto [10]. Such results suggested that there is no significant change in the state of MMAO occurred upon the modifications. However, the changes of the amount of MMAO on the fillers surface (the penetration depth for XPS is ca. 5 nm) were still observed. It should be noted that for O1s atom it can also come from the TiO_2 . Therefore, only Al2p should be concerned in comparing the amount of MMAO on the fillers. It can be observed that the amount of Al2p (MMAO) in

both of the modified TiO₂ were higher than that of the unmodified one suggesting that both Ga and Zr assisted TiO₂ in holding more MMAO onto the surface. This result is consistent with the TGA results, which found that the modified fillers have the stronger interaction with MMAO than that of the unmodified filler, hence causing the modified fillers in holding more MMAO onto the surface as observed. When comparing the amount of two modifiers: Zr and Ga, it can be observed that the amount of Ga was present more than Zr at the surface although they were loaded at the same amount (1 wt %). This implies that Zr was located deeper into the fillers. The different location of both elements resulted in different interaction of them.

The XPS can also prove the surface heterogeneity by using FWHM values (full width at half maximum intensity), which the higher values indicate the more heterogeneous nature to the filler surface [12]. Hence, the FWHM values of Ti2p (the main element of the fillers) were investigated to prove the surface heterogeneity for the fillers. It was found that the FWHM were in order of: TiO₂-Ga (1.01 eV) > TiO₂-Zr (0.97 eV) > TiO₂ (0.70). This result indicates that both modified fillers have more surface heterogeneity than the unmodified one. The poor distribution of MMAO on the filler surface may be the cause of the surface heterogeneity.

To investigate the catalytic performance of the finished fillers, they were introduced as a supported catalyst into the polymerization system to produce LLDPE/TiO₂ nanocomposites. The yield of the product and the polymerization time for each system were kept, and then the catalytic activities were obtained as shown in Table 2. It was found that the unmodified TiO₂ exhibited the highest activities among all fillers. In fact, some authors have reported previously that Ga and Zr as modifier to fillers could increase the catalytic activity of the polymerization systems [9, 10, 12]. The lower catalytic activity for the Ga and Zr modified fillers in this place may derive from the stronger interaction with the MMAO as observed by TGA. In addition, the poor distribution of MMAO on the filler surface as noticed in the XPS results may be another reason for the catalytic performance deterioration.

Table 2. Catalytic activities upon different fillers.

Filler	Polymerization time ^a (sec)	Yield (g)	Catalytic activity ^b (× 10 ⁴ kg polymer/mol Zr.h)
TiO ₂	110	1.58	3.46
TiO ₂ -Zr	123	1.72	3.35
TiO ₂ -Ga	128	1.48	2.77

^aA period of time used for the total 0.018 mol of ethylene to be consumed.

^bMeasurement at polymerization temperature of 70 °C, [ethylene]=0.018 mol, [Al]_{MMAO}/[Zr]=1135, [Al]_{TMA}/[Zr]_{cat}=2500, in toluene with total volume = 30 mL, and [Zr]_{cat} = 5 × 10⁻⁵ M.

3.2. Characteristics of Polymer Nanocomposites

The LLDPE/TiO₂ nanocomposites were further characterized by differential scanning calorimeter (DSC) and ¹³carbon nuclear magnetic resonance (¹³C NMR) techniques to investigate how the different fillers affect the properties of the polymers. It was found that no melting temperatures (T_m) evaluated by DSC can be observed in all the samples (not shown) indicating non-crystalline polymers produced in this specified polymerization system. Losing crystallinity in LLDPE polymer is generally caused by an excessive level of comonomer content [13]. The amount of 1-hexene in the polymer composites, investigated by ¹³C NMR is shown in Table 3, also supported that result with the quite high values of 1-hexene insertion above 35%. When comparing the amounts of 1-hexene among the entire samples, it was found that Zr-modified filler allowed the higher 1-hexene incorporation than the unmodified filler while Ga-modified filler allowed the lower one. This result is radically different from our previous studies [14-15] which found that both Zr and Ga enhanced comonomer incorporation in the polymer composite products due to serving as an anchoring unit. The lower 1-hexene incorporation in the Ga-modified filler is probably because of its heterogeneity obstructing 1-hexene access.

Table 3. Characteristics of different LLDPE/TiO₂ nanocomposites.

Sample	1-Hexene insertion (mol%) ^a	GPC analysis		
		M _w (g mol ⁻¹)	M _n (g mol ⁻¹)	MWD
TiO ₂	40.9	28322	5871	4.8
TiO ₂ -Ga	36.4	33008	5543	6.0
TiO ₂ -Zr	44.5	22454	5547	4.0

^aObtained from ¹³C NMR.

The molecular weight (M_w), molecular number (M_n), and molecular weight distribution (MWD) are also shown in Table 3. It was found that the molecular weight increased in the opposite direction of the 1-hexene incorporation. This is because the presence of 1-hexene increases the gap between the cationic active species and counter anion more separately in propagation step [16], consequently allowing the higher frequency of chain transfer reactions, leading to a decrease in polymer molecular weight [17-18]. Observing from the characteristic of M_w peaks (Fig.5), it was found that TiO₂-Ga provided a bimodal M_w to the polymer composite products with the nearby two M_w peaks (log M_w ~ 3.7 and 4.6), whereas for the remained fillers the unimodal M_w characteristics were observed with the peaks at log M_w ~3.7, which is not quite separated from the main peak. In addition, TiO₂-Ga provided the broadest M_w peaks as also observed from the MWD values in Table 3. The bimodal M_w and broad peak were probably due to the surface heterogeneity of the fillers, which is corresponding to the XPS results. Therefore, the result of GPC was consistent with the XPS investigation above where TiO₂-Ga possessed the most surface heterogeneity than the other fillers, and then it was the only filler in this study that offered the bimodal M_w polymer composites.

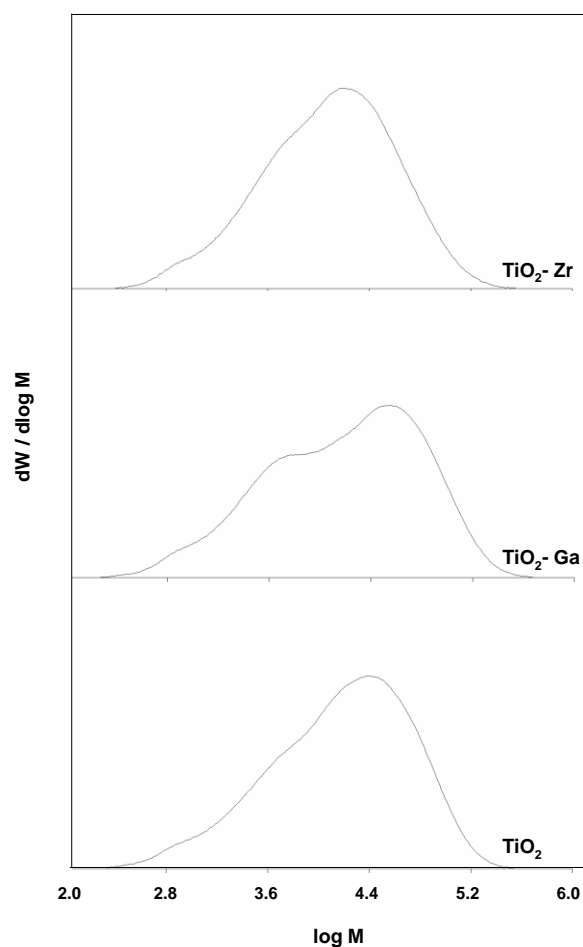


Fig. 5. GPC profiles of LLDPE obtained from different fillers.

4. Conclusion

By observing the properties of three different fillers (nano-TiO₂, nano-TiO₂-Ga and nano-TiO₂-Zr), it was found that most of them including bulk phase crystallinity, surface properties and particle size were fairly similar. The major different property among them was the interaction between MMAO and the surface. It revealed that the strongest one belongs to the nano-TiO₂-Ga, and it led to the lowest catalytic activity for its polymerization system. However, the nano-TiO₂-Ga can provide the bimodal MWD property for the nanocomposite product, due to its surface heterogeneity.

Acknowledgement

The authors gratefully acknowledge the Thailand Research Fund (TRF) and the project for Higher Education Promotion and National Research University Development (AM1088A), Office of the Higher Commission (CHE) for the financial support of this project.

References

- [1] R. Nawang, I. D. Danjaji, U. S. Ishiaku, and H. Ismail, "Mechanical properties of sago starch-filled linear low density polyethylene (LLDPE) composites," *Polym. Test.*, vol. 20, no. 2, pp. 167-172, 2001.
- [2] C. J. R. Verbeek, "Highly filled polyethylene/phlogopite composites," *Mater. Lett.*, vol. 52, no. 6, pp. 453-457, 2002.
- [3] Y. Q. Huang, Y. Q. Zhang, and Y. Q. Hua, "Studies on dynamic mechanical and rheological properties of LLDPE/nano-SiO₂ composites," *J. Mater. Sci. Lett.*, vol. 22, no. 14, pp. 997-998, 2003.
- [4] G. B. Rossi, G. Beaucage, T. D. Dang, and R. A. Vaia, "Bottom-up synthesis of polymer nanocomposites and molecular composites: Ionic exchange with PMMA latex," *Nano Lett.*, vol. 2, no. 4, pp. 319-323, 2002.
- [5] Q. Wang, L. Li, and Z. Fan, "Polyethylene with bimodal molecular weight distribution synthesized by 2,6-bis(imino)pyridyl complexes of Fe(II) activated with various activators," *Eur. Polym. J.*, vol. 40, no. 8, pp. 1881-1886, 2004.
- [6] Y. Kim, Y. Han, M. H. Lee, S. W. Yoon, K. H. Choi, B. G. Song, and Y. Do, "New Half-metallocene catalysts generating polyethylene with bimodal molecular weight distribution and syndiotactic polystyrene," *Macromol. Rapid Commun.*, vol. 22, no. 8, pp. 573-578, 2001.
- [7] J. B. P. Soares and J. D. Kim, "Copolymerization of ethylene and α -olefins with combined metallocene catalysts. I. A formal criterion for molecular weight bimodality," *J. Polym. Sci., Part A: Polym. Chem.*, vol. 38, no. 9, pp. 1408-1416, 2000.
- [8] B. Jongsomjit, S. Ngamposri, and P. Praserttham, "Observation of bimodal polyethylene derived from TiO₂-supported zirconocene/MAO catalyst during polymerization of ethylene and ethylene/1-hexene," *Catal. Lett.*, vol. 117, no. 3-4, pp. 177-181, 2007.
- [9] W. Owpradit and B. Jongsomjit, "A comparative study on synthesis of LLDPE/TiO₂ nanocomposites using different TiO₂ by in situ polymerization with zirconocene/dMMAO catalyst," *Mater. Chem. Phys.*, vol. 112, no. 3, pp. 954-961, 2008.
- [10] H. Hagimoto, T. Shiono, and T. Ikeda, "Supporting effects of methylaluminumoxane on the living polymerization of propylene with a chelating (diamide)dimethyltitanium complex," *Macromol. Chem. Phys.*, vol. 205, no. 1, pp. 19-26, 2004.
- [11] J. R. Severn, J. C. Chadwick, R. Duchateau, and N. Friederichs, "'Bound but not gagged' Immobilizing single-site α -olefin polymerization catalysts," *Chem. Rev.*, vol. 105, no. 11, pp. 4073-4147, 2005.
- [12] D. Bianchini, J. H. Z. dos Santos, T. Uozumi, and T. Sano, "Characterization of MAO-modified silicas," *J. Mol. Catal. A: Chem.*, vol. 185, no. 1-2, pp. 223-235, 2002.
- [13] H.F. Mark, "Ethylene Polymers, LLDPE." in *Encyclopedia of Polymer Science and Technology*, vol. 2. New York: John Wiley & Sons, 2002, pp. 441-482.
- [14] M. Wannaborworn and B. Jongsomjit, "Ethylene/1-octene copolymerization over Ga-modified SiO₂-supported zirconocene/MMAO catalyst using in situ and ex situ impregnation methods," *Iran. Polym. J.*, vol. 18, no. 12, pp. 969-979, 2009.

- [15] T. Pothirat, B. Jongsomjit, and P. Praserttham, "Effect of Zr-modified SiO₂-supported metallocene/MAO catalyst on copolymerization of ethylene/1-octene," *Catal. Lett.*, vol. 121, no. 3-4, pp. 266-273, 2008.
- [16] F. Forlini, Z. Q. Fan, I. Tritto, P. Locatelli, and M. C. Sacchi, "Metallocene-catalyzed propene/1-hexene copolymerization: Influence of amount and bulkiness of cocatalyst and of solvent polarity," *Macromol. Chem. Phys.*, vol. 198, no. 8, pp. 2397-2408, 1997.
- [17] M. de Fátima, V. Marques, O. da Silva, A. Coutinho, and A. de Araujo, "Ethylene polymerization catalyzed by metallocene supported on mesoporous materials," *Polym. Bull.*, vol. 61, no. 4, pp. 415-423, 2008.
- [18] H. Hong, Z. Zhang, T. C. M. Chung, and R. W. Lee, "Synthesis of new 1-decene-based LLDPE resins and comparison with the corresponding 1-octene- and 1-hexene-based LLDPE resins," *J. Polym. Sci., Part A: Polym. Chem.*, vol. 45, no. 4, pp. 639-649, 2007.